

Clim-ATIC

Climate Change - Adapting to The Impacts, by Communities in Northern Peripheral Regions

Main project application to the Northern Periphery Programme 2007-2013

Submitted on 31st October 2007



Climate change adaptation at the community level

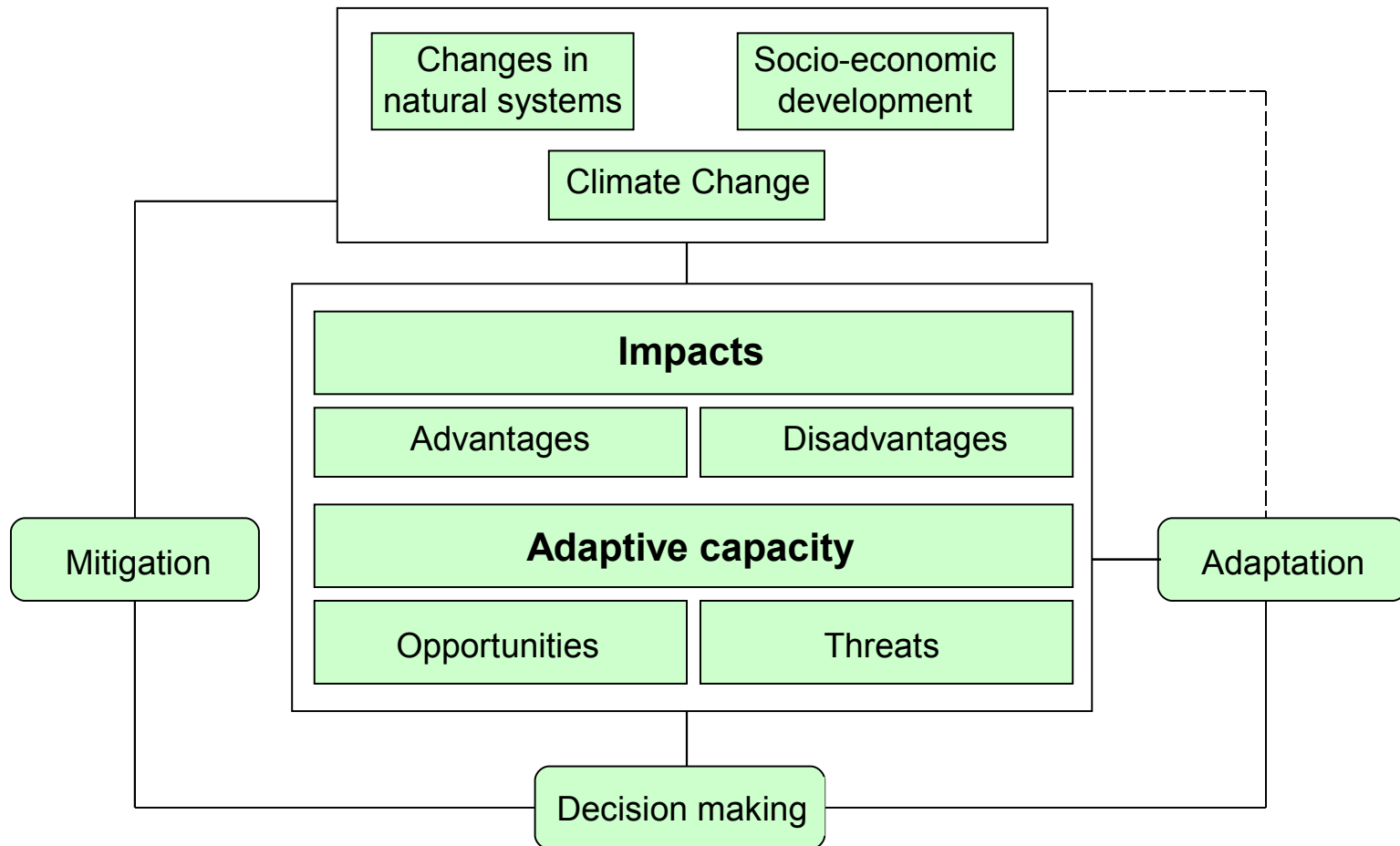


Diagram from Finland's National Adaptation Strategy (2005)



Climate change adaptation at the community level

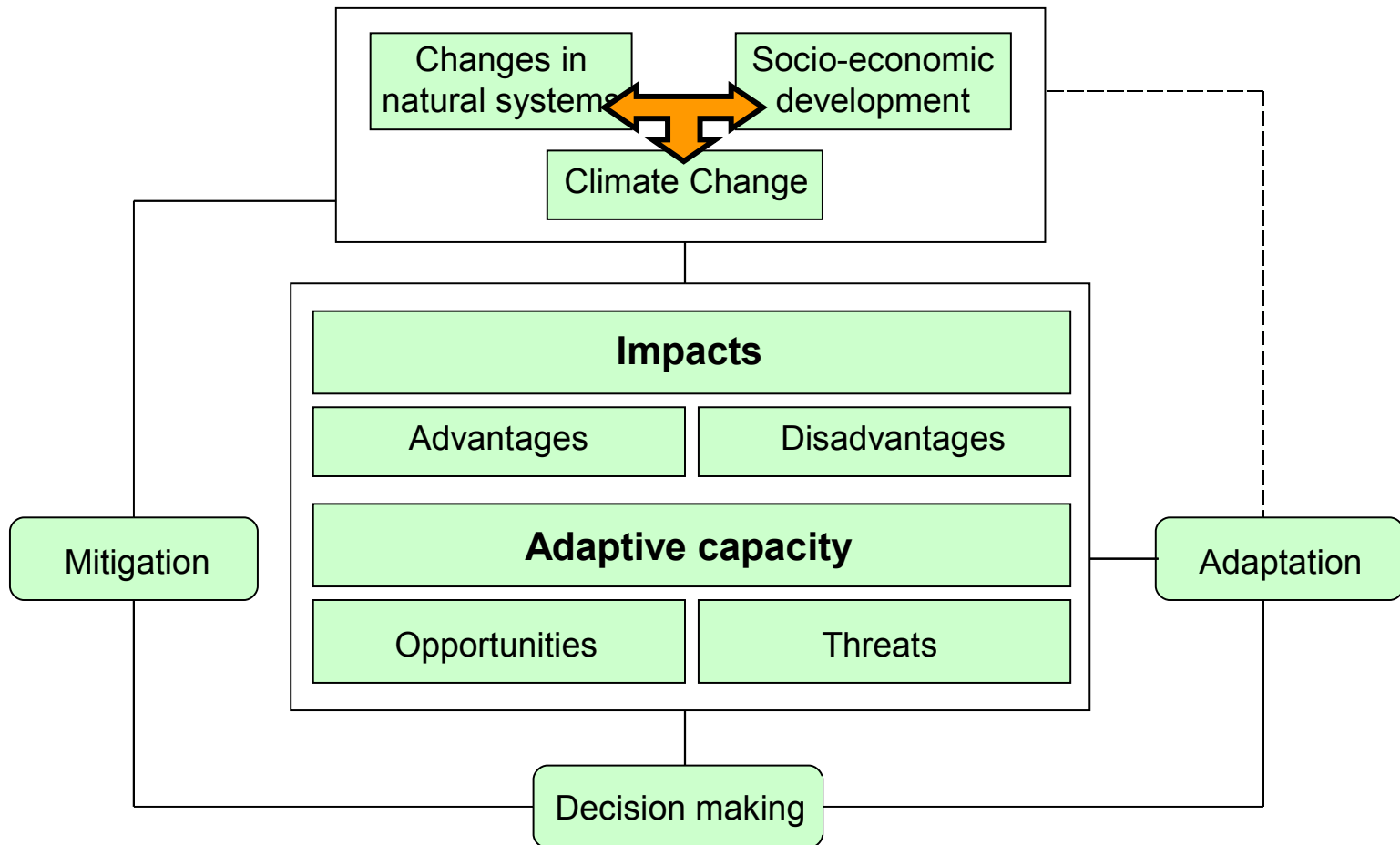


Diagram from Finland's National Adaptation Strategy (2005)



Clim-ATIC's overall objective

The project will establish a sustainable, self-financing delivery mechanism, in association with the University of the Arctic, to provide information, training and advice on climate change adaptation to communities, small businesses, and local administrations across the Northern Periphery.

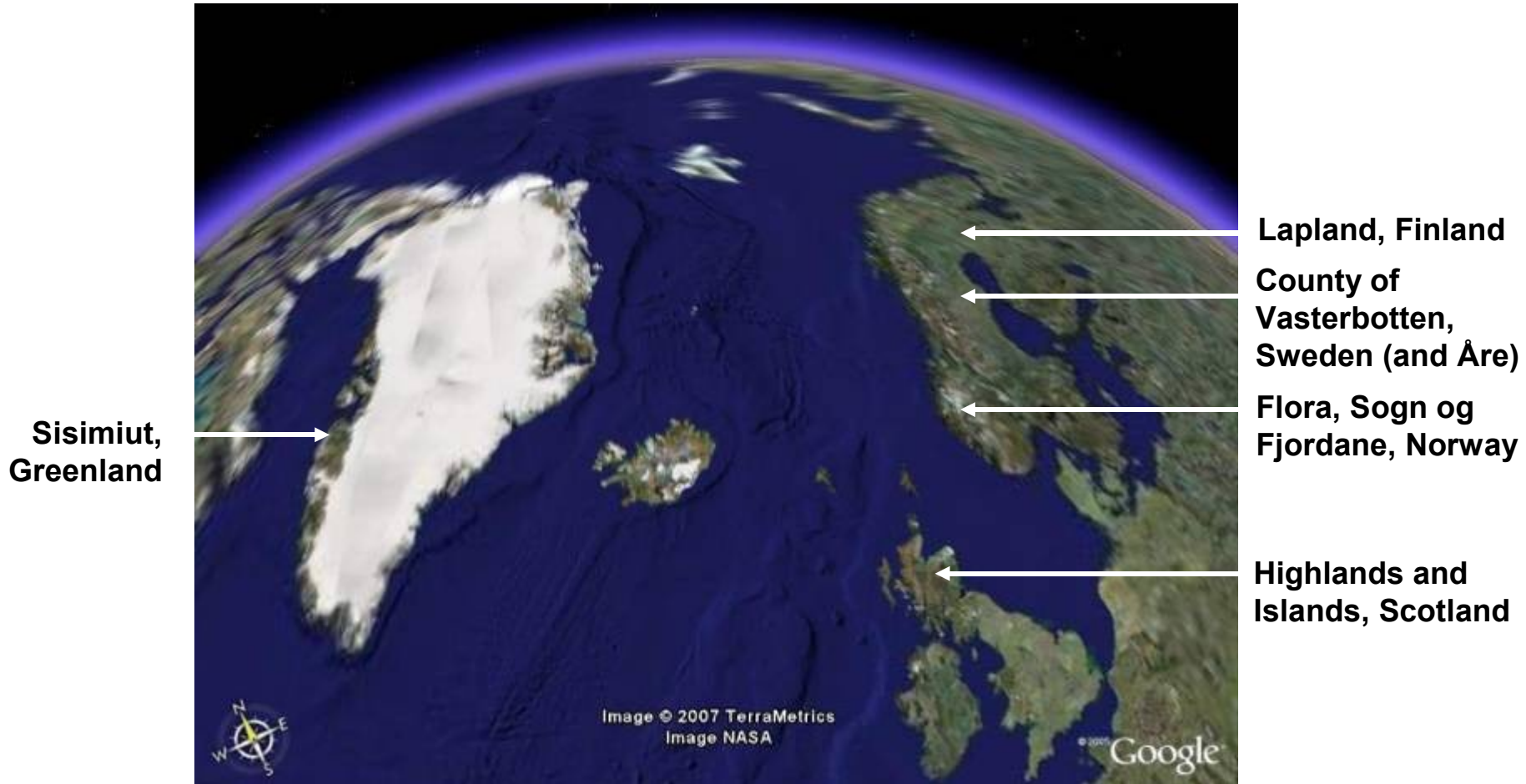


This comprehensive, cross-sectoral trans-national project will result in the best possible understanding of all issues associated with climate change adaptation at a community level.

Clim-ATIC

Climate Change - Adapting to The Impacts, by Communities in Northern Peripheral Regions

5 participating regions with similar climate change impact issues



“A European approach is necessary to ensure proper coordination and the efficiency of policies that address the impacts of climate change.”

The EC Green paper ‘Adapting to climate change in Europe- options for EU action’ (2007)



Clim-ATIC

Climate Change - Adapting to The Impacts, by Communities in Northern Peripheral Regions

Climate change adaptation cuts across all sectors and political levels.

Clim-ATIC will focus on 4 key priority themes for the Northern Periphery



risk and response management



sustainable transport



local sustainable energy



tourism opportunities



Clim-ATIC

Climate Change - Adapting to The Impacts, by Communities in Northern Peripheral Regions

Clim-ATIC is a 3 year project with 5 interlinked transnational workpackages

WP 1

Project management, coordination & communication

WP 2

Regional Climate Change and Scenarios

WP 3

Identify community climate adaptation opportunities

WP 4

Adaptation Demonstration Projects

WP 5

Community Climate Change Adaptation Information, Training & Advice Service

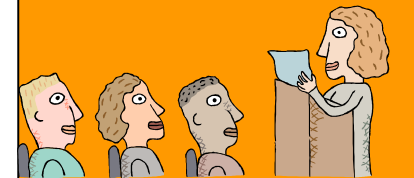
Project launch meeting



Community exchange visits



International seminar

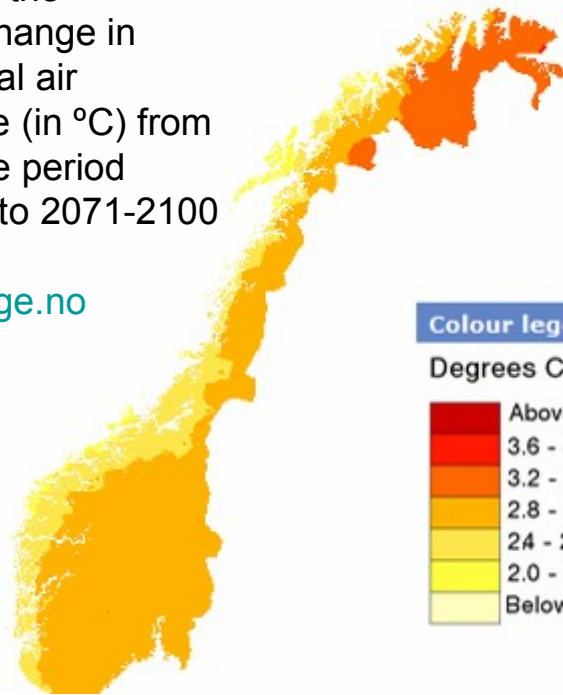


WP 2

Regional Climate Change impacts, scenarios and visualisations

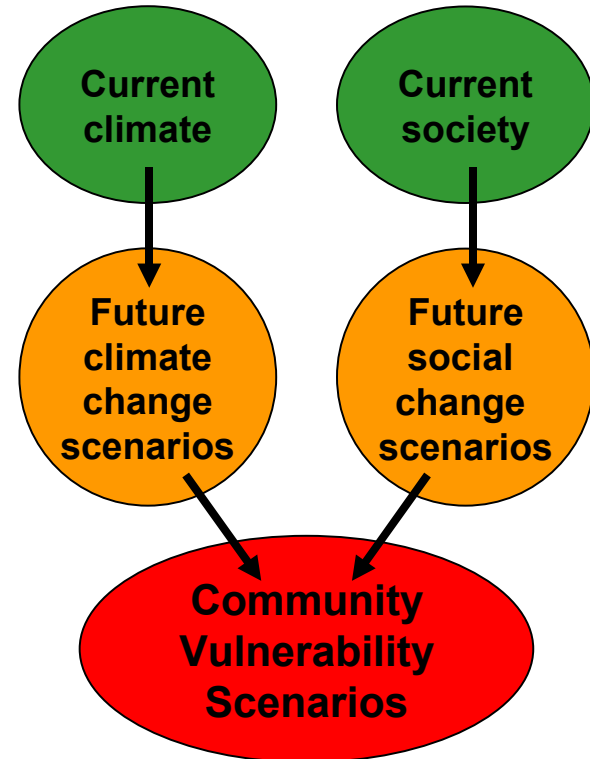
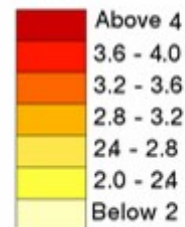
Map shows the projected change in mean annual air temperature (in °C) from the baseline period 1961-1990 to 2071-2100 for Norway.

www.senorge.no



Colour legend

Degrees Celsius



“uncertainties remain particularly in relation to more accurate and detailed forecasts as to the impacts of climate change at regional and local levels”

The Commission of European Communities' Green paper 'Adapting to climate change in Europe- options for EU action' (2007)

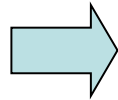
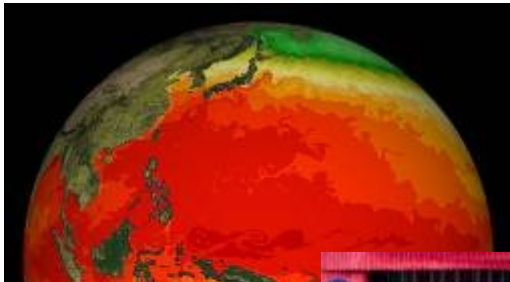
Clim-ATIC

Climate Change - Adapting to The Impacts, by Communities in Northern Peripheral Regions

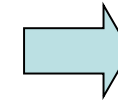
WP 3

Community climate adaptation opportunities and strategies

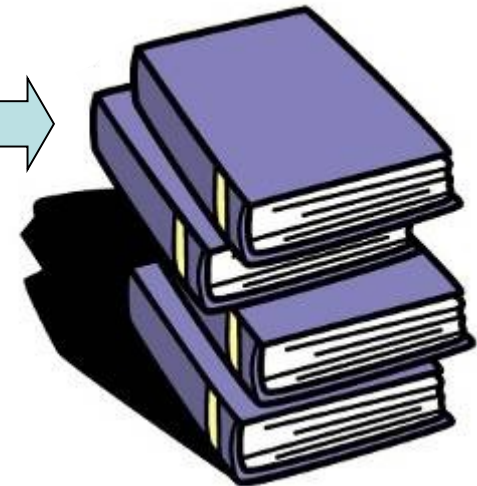
Climate change impact visualisations



Community brainstorming meetings



Community adaptation action plans



“adaptation measures should be fit for purpose, be based on a good evidence base, involve all stakeholders and aim to achieve SMART objectives”

The UK Climate Impacts Programme report ‘Identifying Adaptation Actions’ (2007)



WP 4

Community Adaptation Demonstration Projects

Planning, supporting, managing, evaluating and extracting lessons from 12 adaptation projects across the Northern Periphery with a strong emphasis on local economic benefits

	sustainable transport	tourism opportunities	sustainable energy management	risk management and response
Finland		✓		✓
Greenland	✓	✓	✓	
Norway			✓	✓
Scotland	✓	✓	✓	
Sweden	✓	✓		

“Building adaptation capacity involves creating information and conditions that enable adaptation actions to take place and delivering adaptation actions that will help to reduce vulnerability to climate risks or exploit opportunities ”

‘Climate Change – the UK Programme’ (2006)

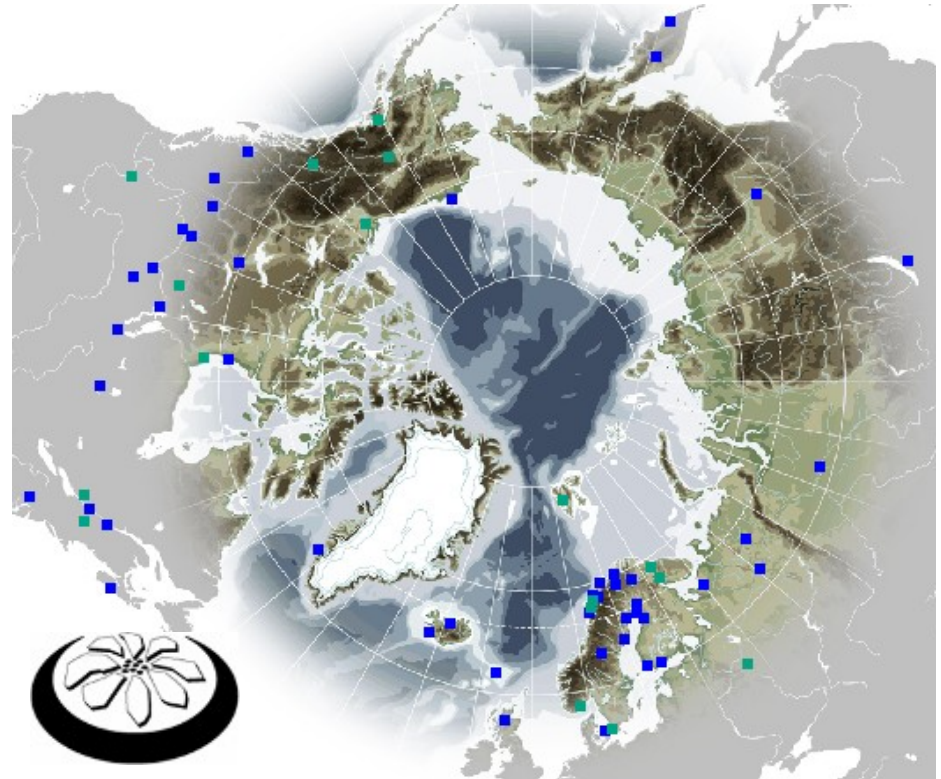


WP 5

Establish a Northern Periphery Community Climate Change Adaptation Information, Training, and Advice service

We will establish an affordable, accessible, relevant and up-to-date service for local communities, businesses, entrepreneurs, administrations and politicians across the entire Northern Periphery.

The University of the Arctic will be the initial framework for this service; the aim is to have a network with a node in each Northern Periphery region.



“There is an obvious need to strengthen policy relevant research and development relating to the impacts of climate change and adaptation”

